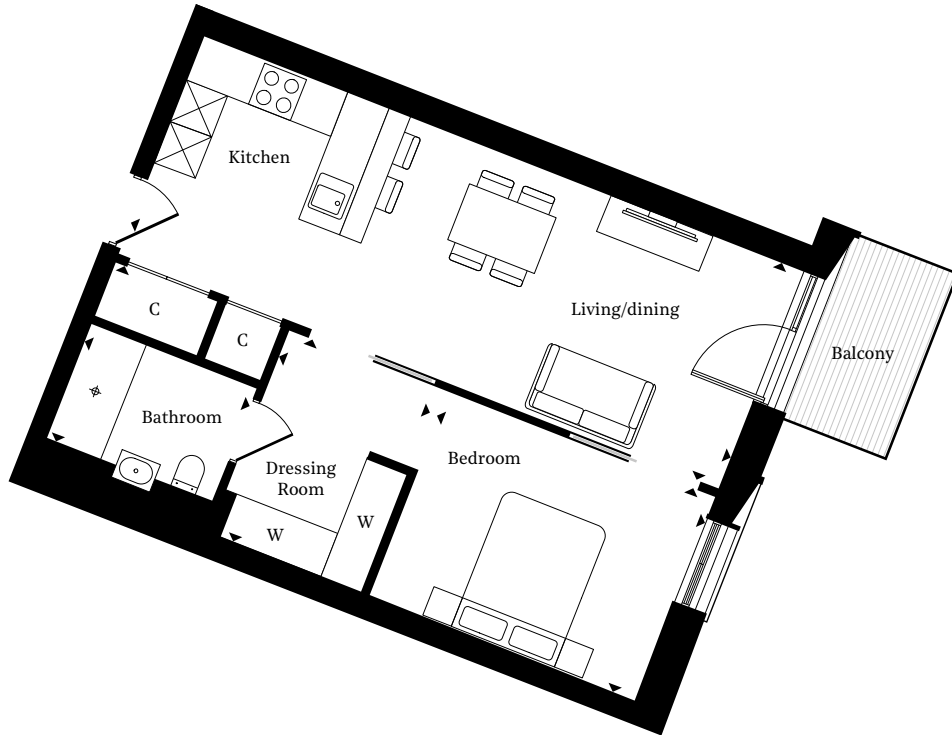


# 101<sup>ON</sup> CLEVELAND

LONDON W1



## TYPICAL AREA 54.2 SQ M / 583 SQ FT

Living / Kitchen / Dining	8.8 X 3.2m / 28'8" X 10'5"
Master Bedroom	3.8 X 3.0m / 12'7" X 9'8"
Dressing Room	3.0 X 2.3m / 9'8" / 7'6"
Master En Suite	2.4 X 1.7m / 7'11" X 5'7"

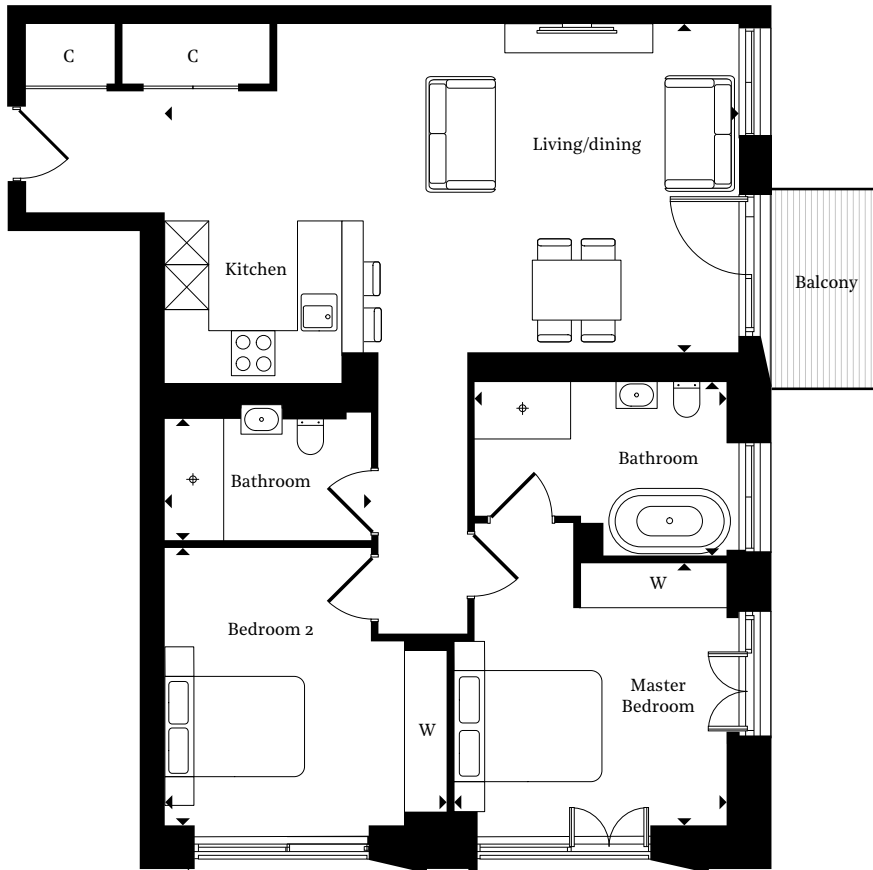


---

TYPICAL 1 BED

# 101<sup>ON</sup> CLEVELAND

LONDON W1



## TYPICAL AREA

89.9 SQ M / 968 SQ FT

Living / Kitchen / Dining	7.8 X 4.5m / 25'6" X 14'7"
Master Bedroom	3.7 X 3.7m / 12'1" X 12'1"
Master En Suite	3.4 X 2.4m / 11'3" X 7'11"
Bedroom 2	3.9 X 3.8m / 12'10" X 12'6"
Bathroom	2.7 X 1.7m / 9'2" X 5'7"



TYPICAL 2 BED

# 101<sup>ON</sup> CLEVELAND

LONDON W1



## TYPICAL AREA

97.4 SQ M / 1,048 SQ FT

Living / Kitchen / Dining	8.6 X 3.5m / 28'2" X 11'4"
Master Bedroom	4.4 X 3.6m / 14'5" X 11'4"
Dressing Room	3.0 X 2.2m / 9'8" / 7'4"
Master En Suite	3.2 X 1.7m / 10'5" X 5'7"
Bedroom 2	3.1 X 3.0m / 10'2" X 9'11"
En Suite 2	2.0 X 1.8m / 6'6" X 5'11"
Bedroom 3 / Study	4.3 X 2.7m / 14'2" X 8'8"
Bathroom	2.4 X 1.5m / 7'9" X 4'11"



TYPICAL 3 BED